

Parkheath

Sold on Service

Byron Mews NW3
£475,000

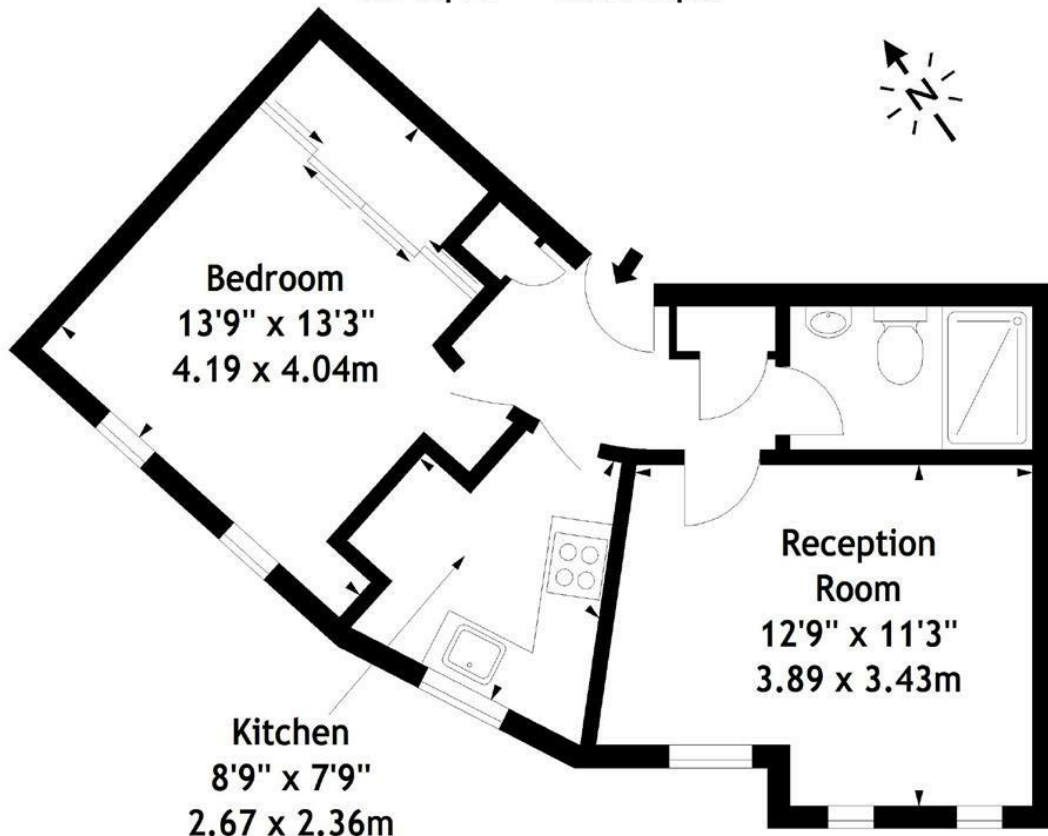


Modern gated development
Allocated parking space
Ground floor 467 sq ft approx
12' reception
8' kitchen with window

One bedroom apartment
Wood flooring
189 years from 1995
13' bedroom with wardrobes
Fully tiled shower room

Belsize Park Office 020 7431 3104

Byron Mews, NW3
Approx. Gross Internal Area
467 Sq Ft - 43.38 Sq M



Ground Floor

Measured in accordance with RICS guidelines. Every attempt is made to ensure accuracy, however all measurements are approximate. This floor plan is for illustrative purposes only and is not to scale.

© Datography Ltd 2014

Photographs * Floorplans * Virtual Tours
Tel: 0845 643 4401 www.datography.com

The particulars do not constitute part of an offer or contract. The particulars, including text, photographs and plans, are for the guidance only of prospective purchasers/tenants and must not be relied upon as statements of fact. The descriptions provided therein represent the opinion of the author and whilst given in good faith should not be construed as statements of fact. Nothing in these particulars shall be deemed a statement that the property is in good condition or otherwise or that any services or facilities are in good working order. All measurements are approximate